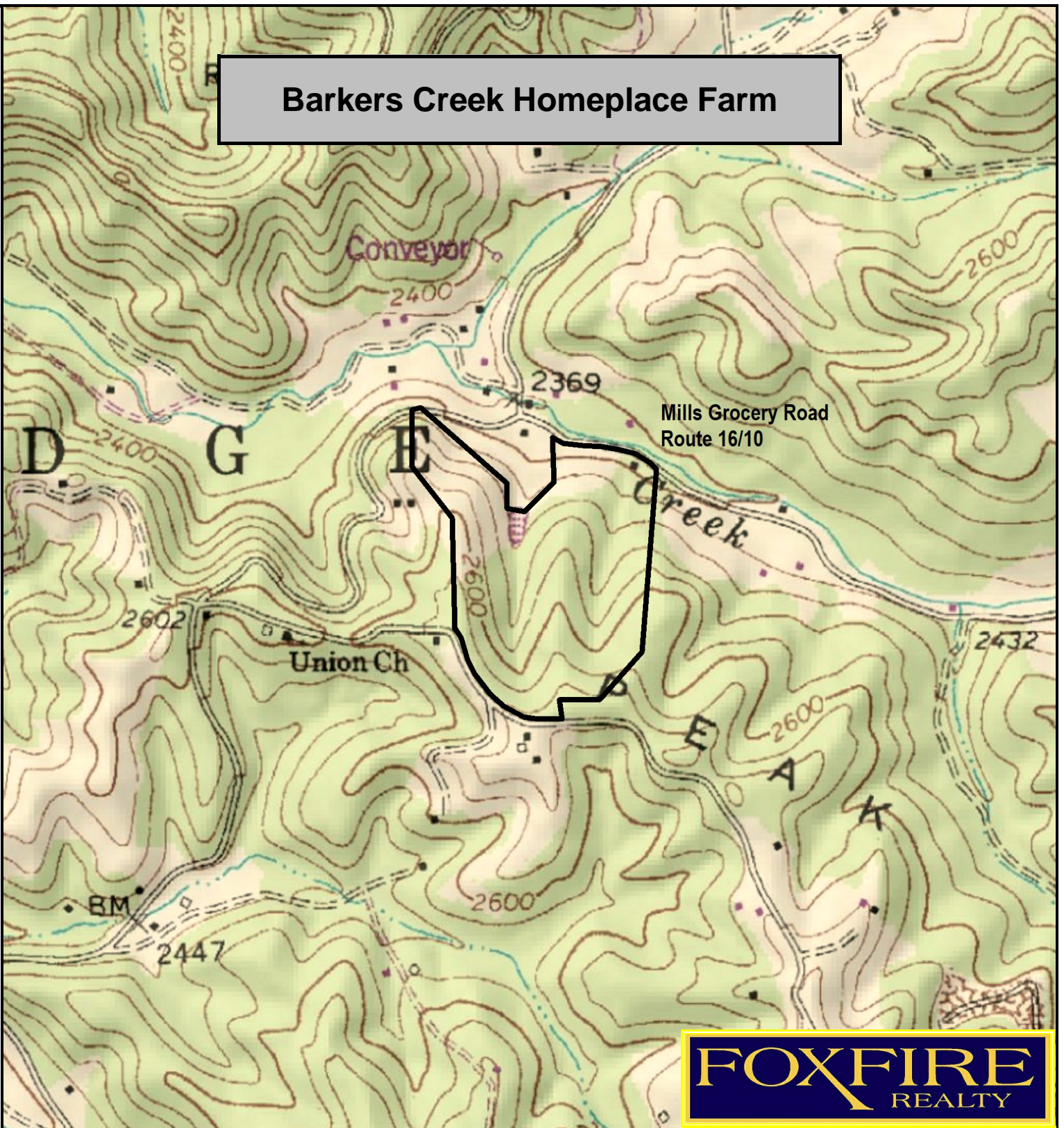


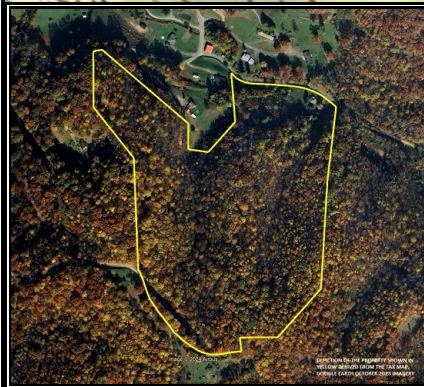
Barkers Creek Homeplace Farm



FOXFIRE
REALTY

Barkers Creek Homeplace Farm, Wyoming County, WV
TOPOGRAPHIC MAP
Elevation Range: 2386' - 2680' +/-
Google Coordinates: LAT 37.530086 (N), LON -81.291120 (W)
This map is for general location purposes only. Consult a licensed land
surveyor for actual boundary location and acreage.
DEPICTION DERIVED FROM THE TAX MAP

RICHARD GRIST, Broker - Auctioneer - Forester
304.645.7674 Richard@Foxfirenation.com
WWW.FOXFIRENATION.COM



FOR TOPO MAP SCALE 1:9600 1 INCH = 800 FT.

