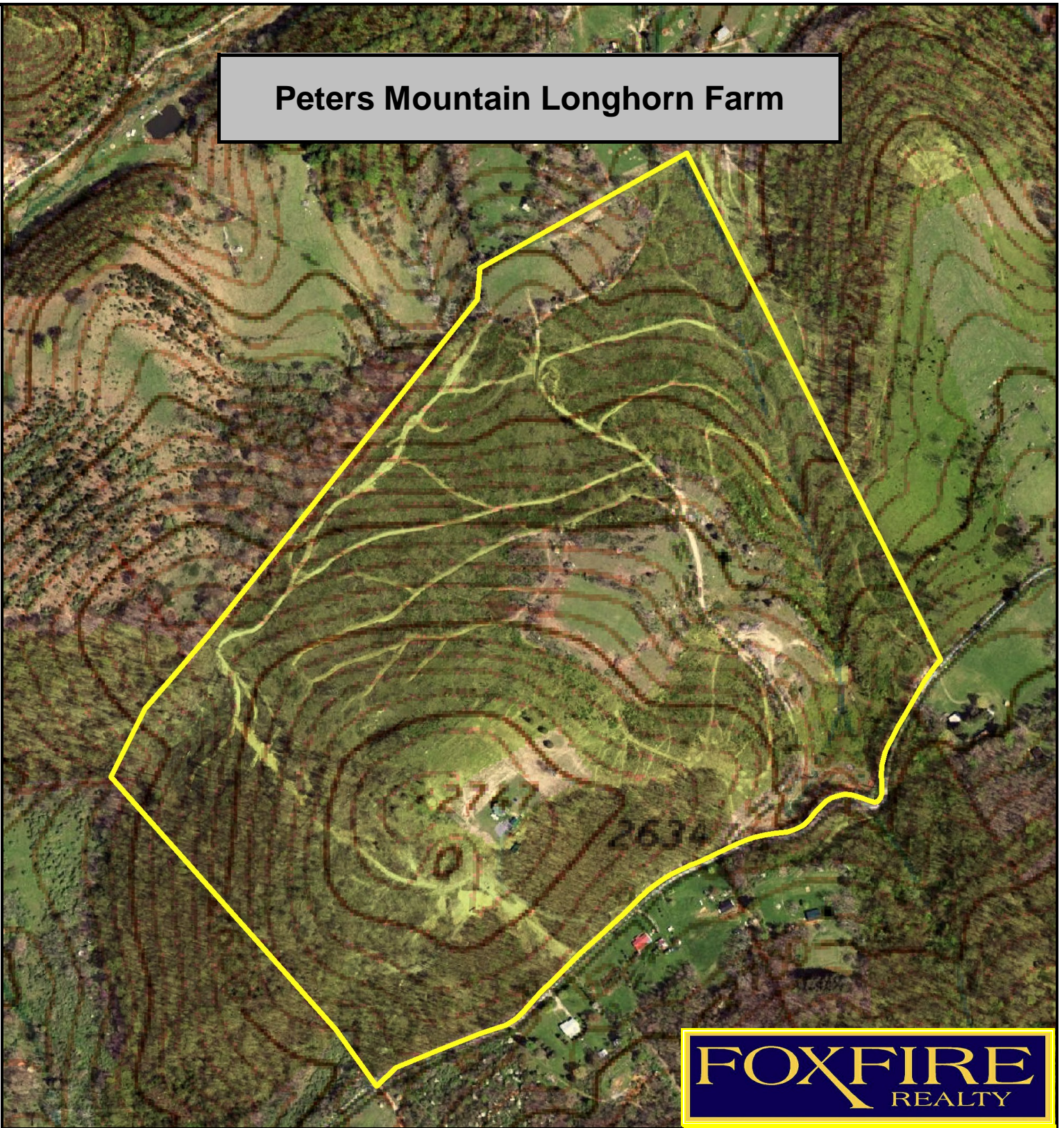


Peters Mountain Longhorn Farm



FOXFIRE
REALTY

Peters Mountain Longhorn Farm, Monroe County, WV
TOPOGRAPHIC AERIAL MAP
Elevation Range: 2256' - 2747' +/-
Google Coordinates: LAT 37.462805 (N), LON -80.599331 (W)
This map is for general location purposes only. Consult a licensed land surveyor for actual boundary location and acreage.

RICHARD GRIST, Broker - Auctioneer - Forester
304.645.7674 Richard@Foxfirenation.com
WWW.FOXFIRENATION.COM



FOR TOPO MAP

SCALE 1:6000

1 INCH = 500 FT.

