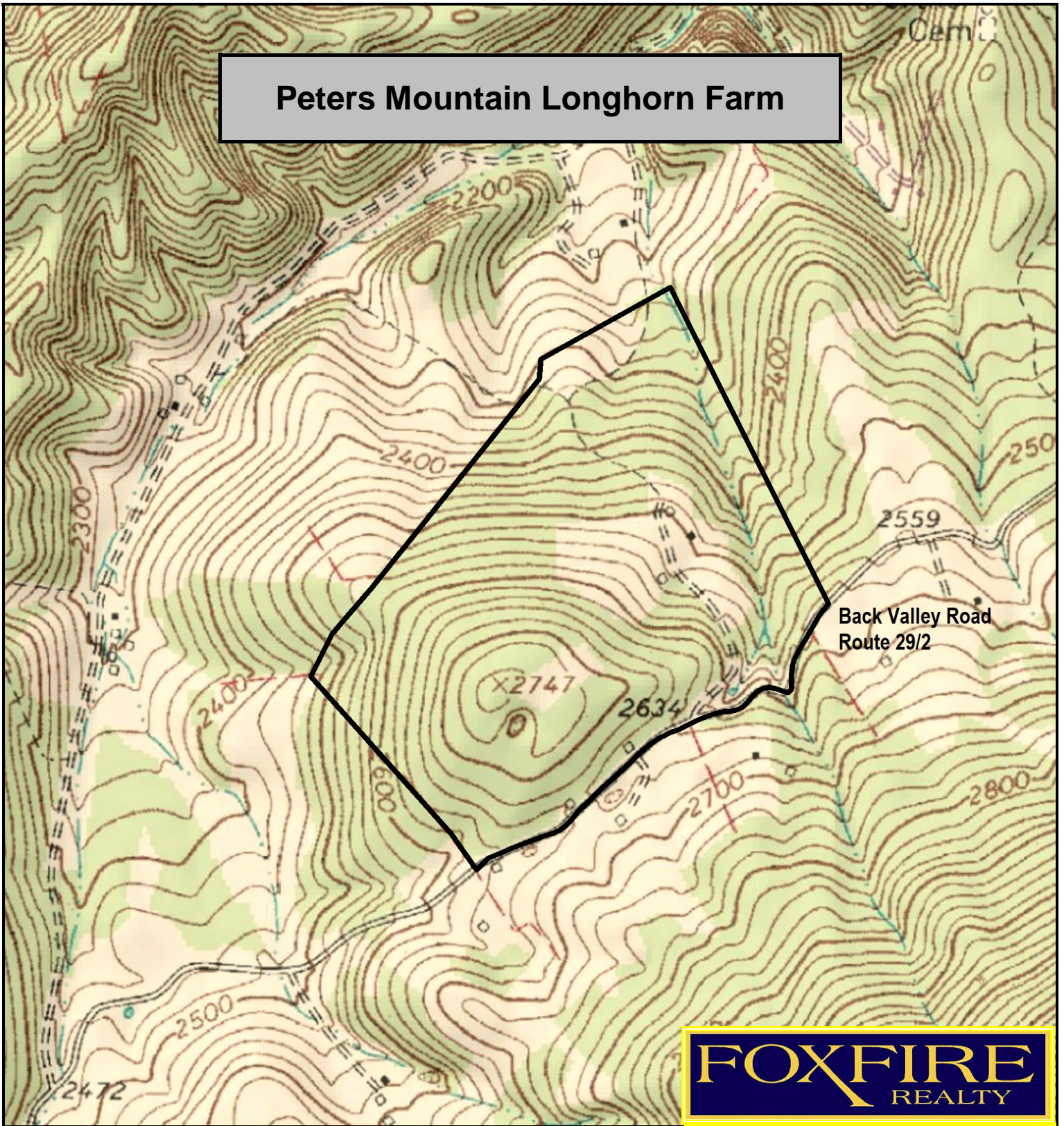


# Peters Mountain Longhorn Farm



**FOX FIRE**  
REALTY

Peters Mountain Longhorn Farm, Monroe County, WV  
TOPOGRAPHIC MAP  
Elevation Range: 2256' - 2747' +/-  
Google Coordinates: LAT 37.462805 (N), LON -80.599331 (W)  
This map is for general location purposes only. Consult a licensed land surveyor for actual boundary location and acreage.

RICHARD GRIST, Broker - Auctioneer - Forester  
304.645.7674 Richard@Foxfirenation.com  
WWW.FOXFIRENATION.COM



FOR TOPO MAP

SCALE 1:9600

1 INCH = 800 FT.

