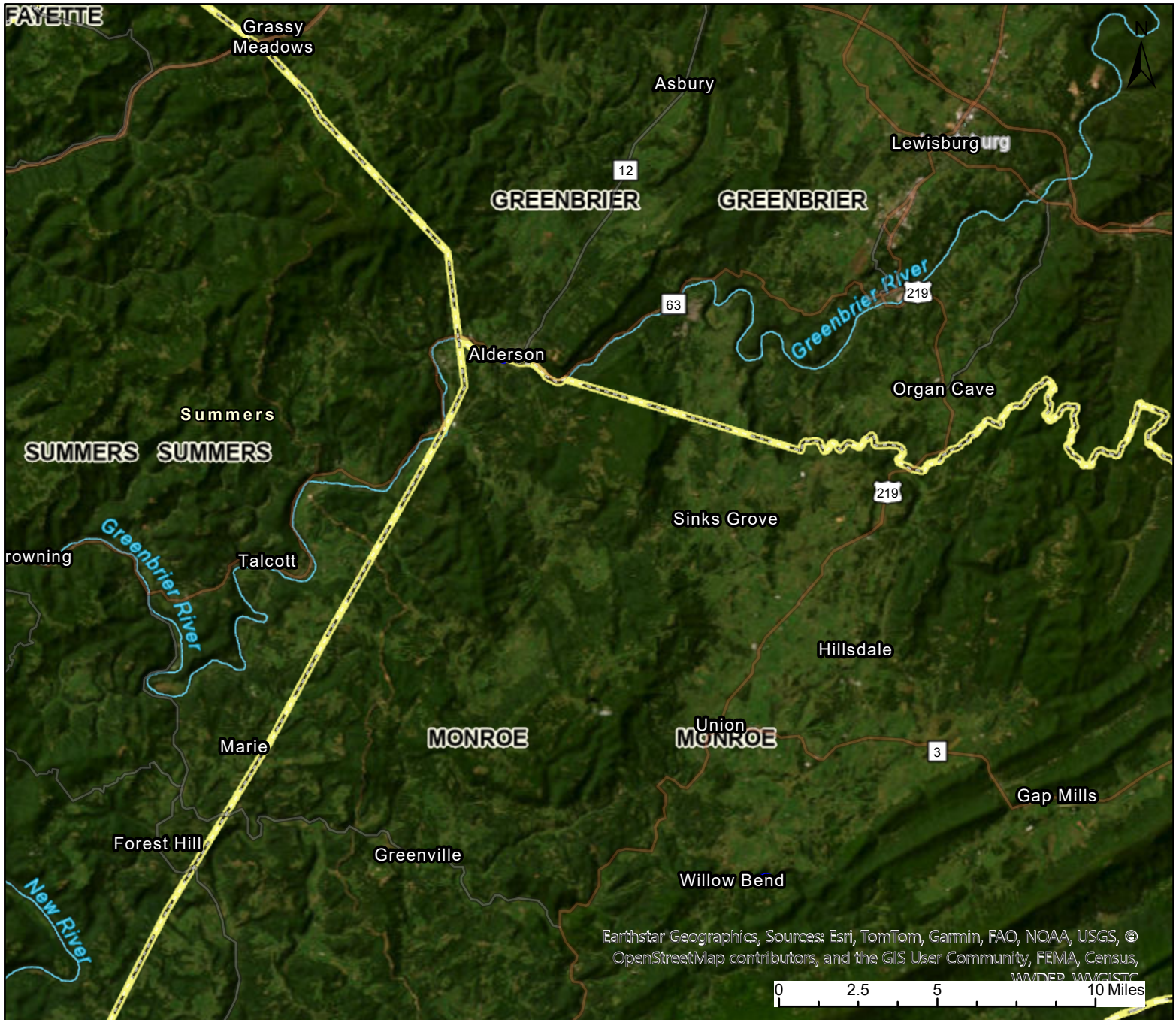


# Johnson & Gwinn Hardware Building



Earthstar Geographics, Sources: Esri, TomTom, Garmin, FAO, NOAA, USGS, © OpenStreetMap contributors, and the GIS User Community, FEMA, Census, WANDER, WANGISTC

0 2.5 5 10 Miles

### User Notes:

The Johnson and Gwinn Building.  
AKA Sam's Tools and Old Stuff.  
342 S MONROE ST, Alderson, WV,  
24910

**Auctioneer and Realtor**



**Randy S. Burdette**

WV Property Viewer (<https://www.MapWV.gov/property>) is supported by WV State Tax Department and WV GIS Technical Center.

Map created on July 19, 2025

### Owner(s):

WALKER SAMMY D WALKER VIRGINIA L

### Address:

### Class Type:

Commercial

### Legal Description:

PT LOT 102; 145'X33' 26'X9'